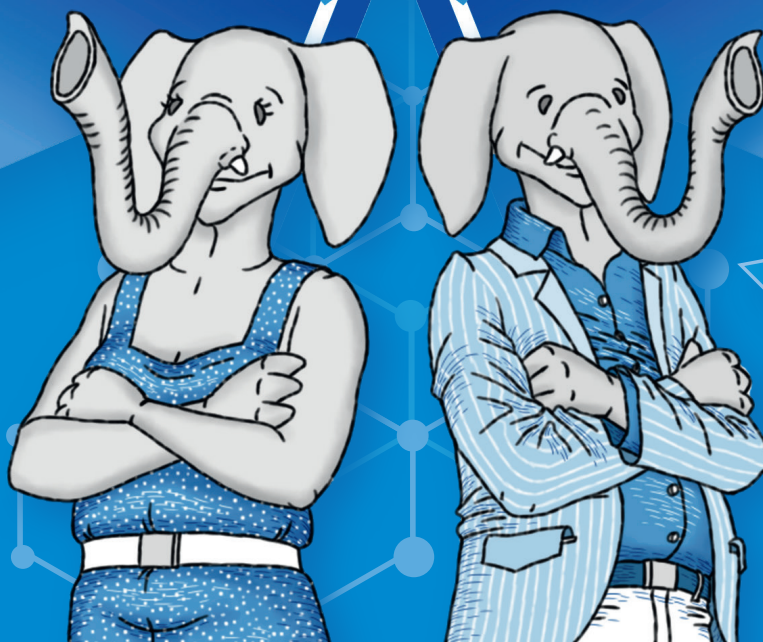


>95% HPLC PURITY • STERILE
Control Peptide Pool

CEF Advanced

Cytomegalovirus **CMV**
Epstein-Barr virus **EBV**
Influenza A virus **Flu**

FREE OF ENDOTOXINS



**The most popular
positive control**

CEF Control Peptide Pool advanced

The most popular positive control

Positive control: essential for successful immune monitoring

T cells and antigen-presenting cells (APCs) are sensitive and can be damaged throughout the entire experimental process: through shear forces during blood collection, delays in transport, exposure to extreme temperatures, cryopreservation and thawing processes.

Positive controls are therefore essential for T cell immune monitoring. Antigen-specific T cell immunity can only be reliably assessed, if the functional fitness of the T cells and APCs is ensured.

The CEF Control Peptide Pool advanced is most popular for testing the functionality of antigen-specific T cells. It has a HPLC purity of over 95%, is sterile and free of endotoxins:

By checking cytokine secretion, the CEF Control Peptide Pool advanced ensures the functionality of T cells and APCs after storage, freezing and thawing.

The CEF Control Peptide Pool advanced is used in methods that are central to vaccine development, tumor targeting and other immunological research areas:

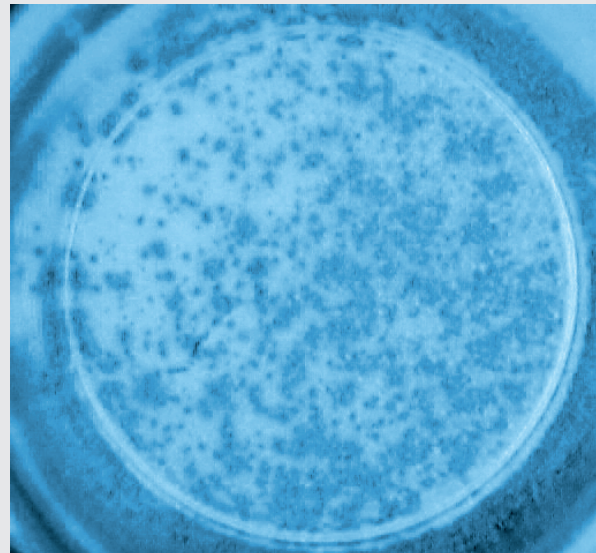
- ELISPOT
- FluoroSpot
- CTL assay
- Analysis of intracellular cytokine
- Flow cytometry

Order directly from our pe shop and benefit from the reliability of CEF Control Peptide Pool advanced, our immediate delivery and our personal customer service:

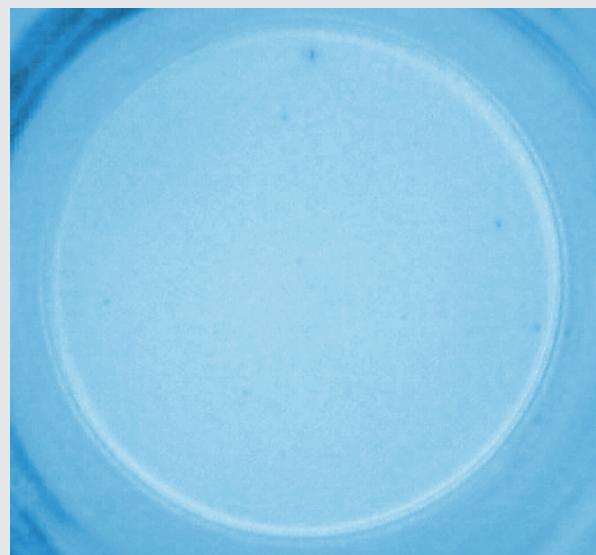


The **CEF Control Peptide Pool advanced** is a lyophilized mixture of 32 peptides from three viruses: Cytomegalovirus (**CMV**), Epstein-Barr virus (**EBV**) and Influenza A virus (**Flu**). The selected peptides are CD8+ T cell epitopes that match common HLA class I alleles. They reliably stimulate human CD8+ T cells to secrete granzyme B and cytokines such as IFN- γ and IL-2. One unit allows the stimulation of 2.5×10^8 cells.

Interferon γ spot-forming cells after stimulation with...



... CEF Control Peptide Pool advanced



... HUMAN (Actin) Peptide Pool as negative control

More peptide pool controls

CEF (classic) Peptide Pool (>95% HPLC)

mixture of 23 peptides from cytomegalovirus, Epstein-Barr virus, and influenza virus

HUMAN (Actin) Peptide Pool

92 overlapping peptides, from a peptide scan through Actin, alpha skeletal muscle

CMV Sub Peptide Pool (>95% HPLC)

14 peptides from cytomegalovirus that match common HLA class I alleles

EBV control Peptide Pool (>95% HPLC)

26 peptides from Epstein-Barr virus that match common HLA class I alleles

HBV control Peptide Pool (>95% HPLC)

9 peptide epitopes from hepatitis B virus that match common HLA class I alleles

HCMVA (IE1) Peptide Pool

120 overlapping peptides, from a peptide scan through IE-1 of human cytomegalovirus

HCMVA (IE2) Peptide Pool

143 overlapping peptides, from a peptide scan through IE-2 of human cytomegalovirus

HCV Sub Peptide Pool (>95% HPLC)

21 peptides from hepatitis C virus that match common HLA class I alleles

HIV control Peptide Pool (95% HPLC)

22 peptides from human immunodeficiency virus that match common HLA class I alleles

HUMAN CT45A1 Peptide Pool

45 overlapping peptides, from a peptide scan through cancer/testis antigen family 45 member A1

Influenza control Peptide Pool (>95% HPLC)

17 peptides from influenza virus that match common HLA class I alleles

RSV control Peptide Pool (>95% HPLC)

28 peptides from respiratory syncytial virus that match common HLA class I alleles

Tetanus Toxin Peptide Pool

326 overlapping peptides, from a peptide scan through tetanus toxin of C. tetani, strain Massachusetts/E88

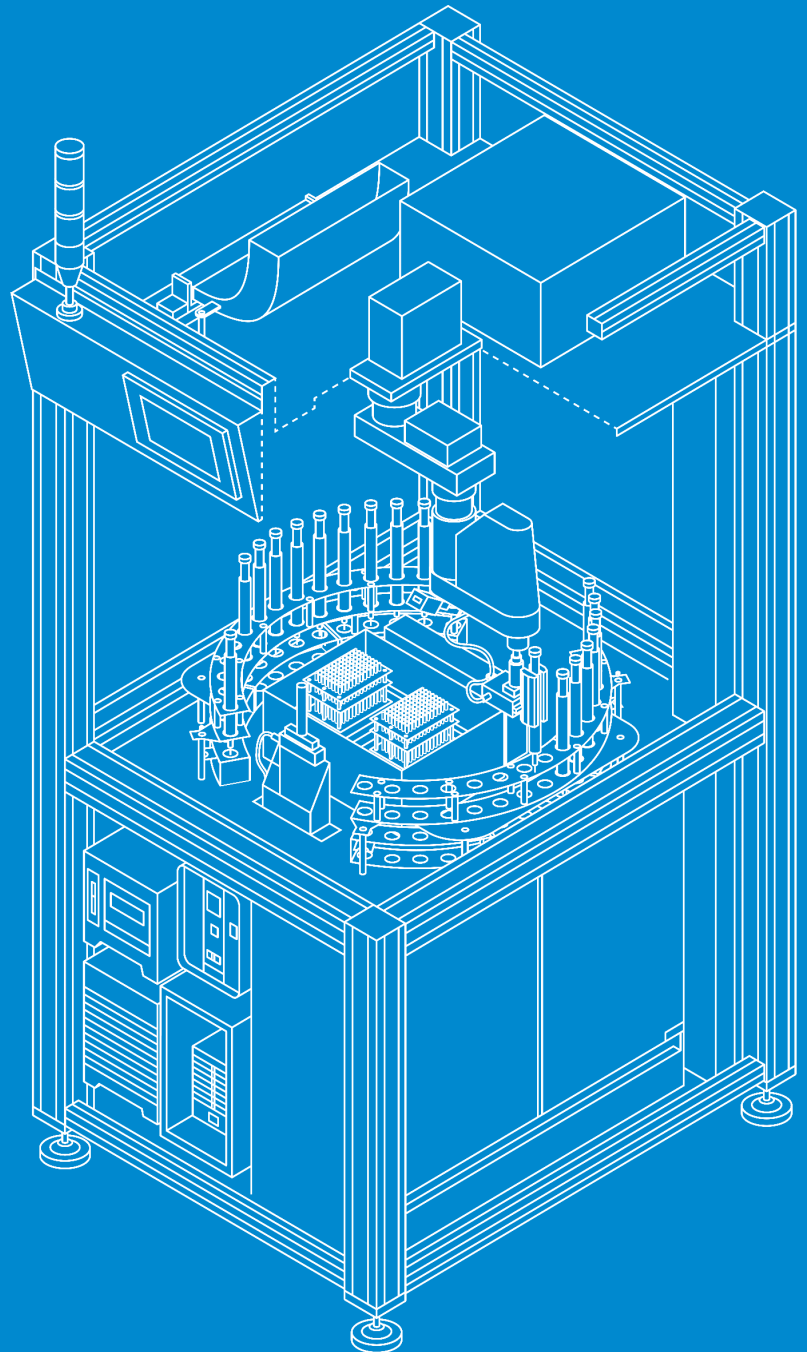
We are big in peptides

Our mission is to provide high quality peptides quickly and efficiently

peptides&elephants develops innovative synthesis robots and supplies scientists worldwide with high-quality peptide products – since 2001.

Our newest proprietary ultra sound peptide synthesis platform (USPS®) enables us to produce hundreds of peptides overnight!

As a manufacturer, we can offer you high-quality peptides at an affordable price. Benefit from our immediate delivery, our reliability and our personal customer service:



peptides&elephants GmbH

Neuendorfstraße 20b
16761 Hennigsdorf
Germany
Tel: +49 (0) 3302 2022000
Fax: +49 (0) 3302 2022001

www.peptides.de

Peptides manufactured in Germany under the strict requirements of DIN ISO 9001.

ISO 9001:2015

Certified
QM-System

